

SHAML SYRIAN CIVIL SOCIETY ORGANIZATIONS COALITION

Members Activity Report (Jan-2018 until July-2018)

Creation Date: 10 September 2018



Basmeh & Zeitooneh
Relief & Development



emissa
Fostering Community Resilience



KESH MALEK
كش ملك



LDSPS
Local development and small projects support office



Context

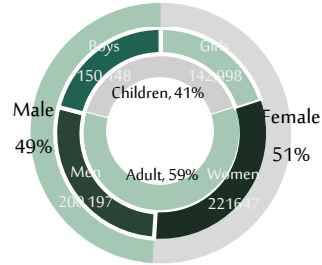
This report covers implemented projects by Shaml civil society organizations since the beginning of 2018, and until June 2018, including activities in relief, development, and civil work where we added the Governance support during the last months. Activities have been implemented in 7 governorates, 20 districts, 33 sub-districts and 65 community. Nevertheless, we are witnessing a constant decrease in our access to the areas in middle and south western Syria, as a result of the Forcive displacement of civilians from their areas. Shaml organizations are reorganizing themselves to keep following the displaced persons to their new locations, and to continue providing assistance through reprogramming activities inside Syria.

714,991

7 Organizations

Distributed Over

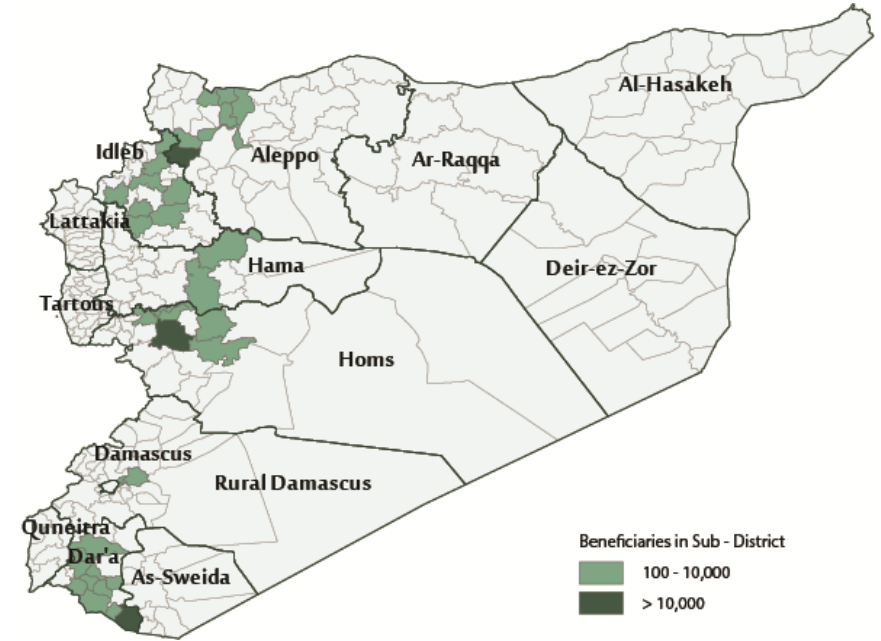
364,645 Female
142,998 Girls
221,647 Women
350,346 Male
150,148 Boys
200,197 Men



Reached to

7 Governorates
20 Districts
33 Sub-districts
65 Communities

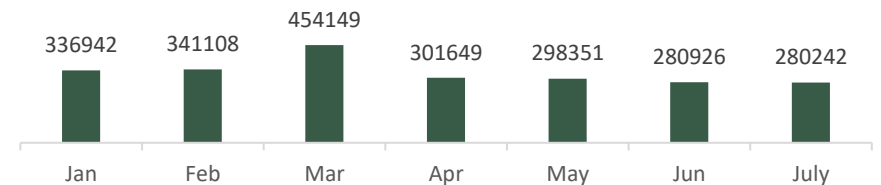
Mapping of SHAML Activities



Sectoral Analysis

Sectoral Analysis		Total Beneficiaries	Organizations Reported	Reached Governorates	Reached Sub-districts	Reached communities
Relief Activities	WASH	333,708	2	3	7	22
	Education	51,149	2	4	6	10
	Early Recovery	15,435	2	3	4	5
	Protection	18,380	1	2	2	2
Non-Relief Activities	Access Coordination	400	1	1	1	1
	Social Cohesion	30,500	1	1	2	4
	Community Resilience	330	1	1	2	5
	Gouvernance	263,165	1	1	3	6
	Women Empowerment	1,924	2	6	26	33

SHAML Activities Across the Months



Note:
Sex and Age Disaggregated driven from HNO 2018

SHAML is a coalition of Syrian CSOs that have got together around the objective of empowering Syrian civil society to have a bigger role in reaching Democracy, Human Rights, Gender and All-citizens Equality in the future of Syria. Shaml is comprised of a group of some of the most successful and promising Syrian CSOs who have a wealth of expertise in providing a range of services; from Human Rights advocacy, Education, Women Empowerment, Psychosocial Support services, Peacebuilding and Conflict transformation, to life-saving assistance, and relief and basic services. Geographically they operate in different areas both inside Syria and with refugees in neighbouring countries. Shaml members currently include: Basmeh & Zeitooneh, Emissa, Kesh Malek, Local Development and Small Projects Support office (LDSPS), Olive Branch, Space of Hope and Women Now for Development

Data source: All data in this report based on Shamel member activities report (4Ws reports for relief activities and the project assessment tool for non-relief activities)

shamlcoalition.org
For more details or any feedback:
im@shamlcoalition.org